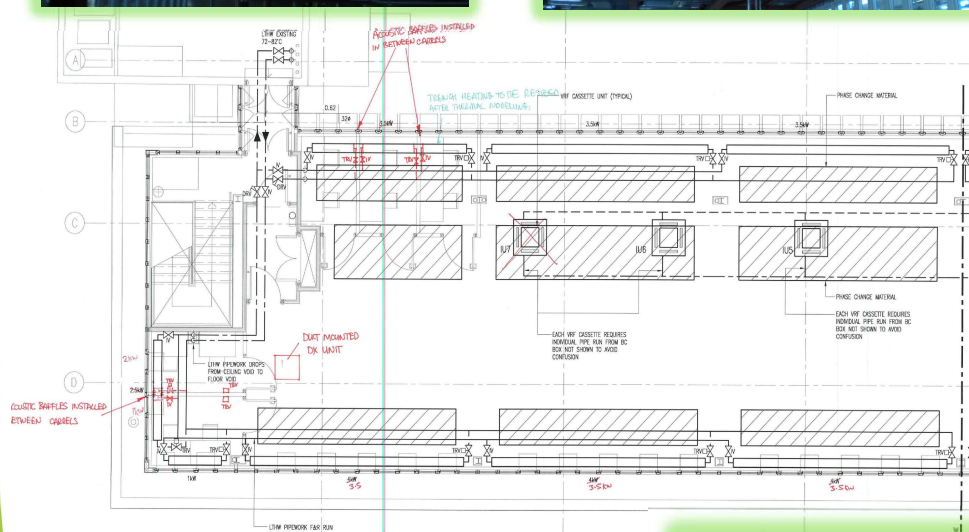
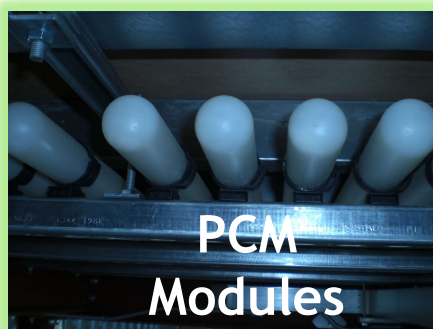


**UNIVERSITY OF WESTMISTER, London, UK**  
**Cavendish Street Building, Passive Cooling**

As part of the drive to demonstrate passive cooling application University of Westminster in London incorporated PCM passive cooling modules within the top floor offices. Utilising the cooler night ambient by simply storing the cool energy within the PCM modules day cooling loads within the office area is absorbed by PCM modules without using any mechanical cooling machinery.



During normal operation mode additional cooling as well as any latent loads i.e. humidity control loads are handled using a conventional VRV system if and when required. Same goes for the heating loads which is provided the same VRV heat pump units.

PCM based TES modules filled with **+27°C (80°F)** PCM encapsulated in 50mm (2") diameter x 1,000mm (40") HDPE **TubeICE™** containers. Tubes are fixed at ceiling level using standard 50mm (2") pipe bracket system.

